

**STRUCTUS™**

BUILDING TECHNOLOGIES

The leader in high-performance drywall corner solutions.

# HYDROTRIM™

*Water-activated, self-adhesive drywall corner trim.*

Available in  
Outside 90 and  
L-Trim profiles.



*HYDROTRIM is an easy-to-apply corner that does not blister, bubble, dent or crack. HYDROTRIM's patent-pending design includes a water activated adhesive and punch holes that allow joint compound to further bond the corner to the drywall.*

### **Fast & Easy to Apply**

*Simply spray with water, press on. No screws, staples or messy adhesive spray needed!*

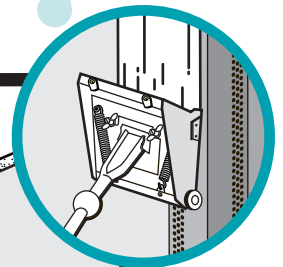
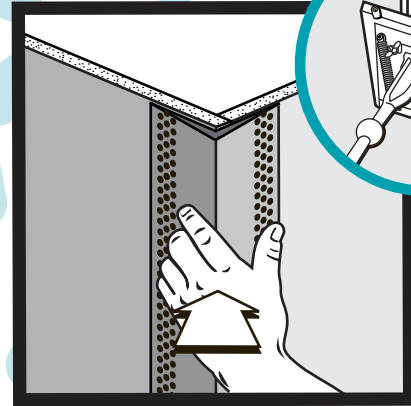
### **Superior Bond**

*Water-activated adhesive creates an indestructible bond to drywall; perforated holes allow joint compound to permanently seal corner to wall.*

### **Will not Dent or Crack**

*Paper-plastic-paper tapered design holds up to even the most severe impacts.*

*Simply spray it with water... press on and finish.*



**Box it for  
faster  
finishing!**

For more information visit [www.hydrotrimcorner.com](http://www.hydrotrimcorner.com), or call 1-888-662-6281.

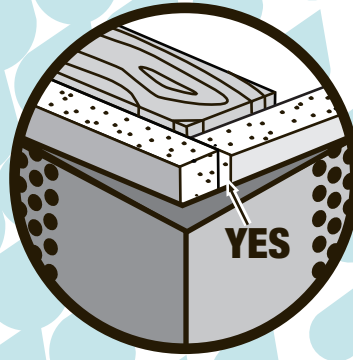
### General Installation Instructions:

When installing drywall for 90° corners, hang drywall as shown. Install the HYDROTRIM corner using **clean, plain, tap water** and finish using All-Purpose joint compound.

**TIP:** HYDROTRIM corners can be cut to length using scissors, metal snips or a chop saw.

**TIP:** Use a chop saw to cut multiple pieces of HYDROTRIM corners in a bundle to the same length at one time.

Structus does not recommend soaking HYDROTRIM corners or using a sponge to apply water to the adhesive.



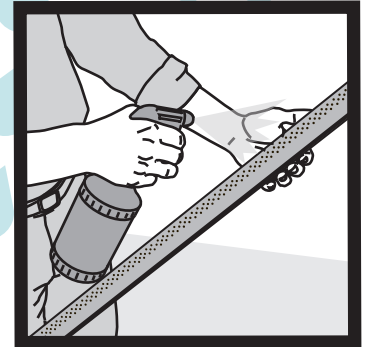
Wet the adhesive side of the HYDROTRIM corner completely with **clean, plain, tap water** using a pump sprayer or spray bottle.

**IMPORTANT:** Make sure the **ENTIRE** adhesive surface of the HYDROTRIM corner is wet.

Applying more water allows for more working time but less immediate tack (stickiness) to wall surface. Applying less water allows for faster tack but less working time.

After applying the water, allow 15 seconds activation time before installing the HYDROTRIM corner.

**TIP:** Put standard food coloring in the water so that you can visibly see water coverage when applying it to the adhesive surface.



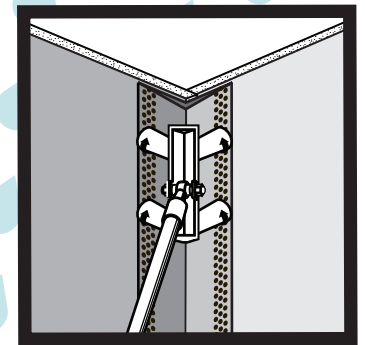
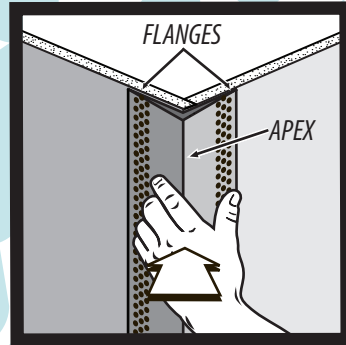
Place the wetted, adhesive side of the HYDROTRIM corner on the wall corner, aligning it tightly to the ceiling with the apex of the HYDROTRIM squared with the center of the corner. Make sure it is straight.

**TIP:** Snap chalk lines to ensure straight corners on bulkheads and long runs.

Firmly press the HYDROTRIM corner by hand or with a roller, making sure the HYDROTRIM flanges fully contact the drywall surface.

**REPOSITIONING:** The HYDROTRIM corner may be removed, re-wetted and repositioned if adhesive has not set-up.

**IMPORTANT:** Once adhesive has set-up, the HYDROTRIM corner cannot be repositioned and will be permanently bonded to the drywall.

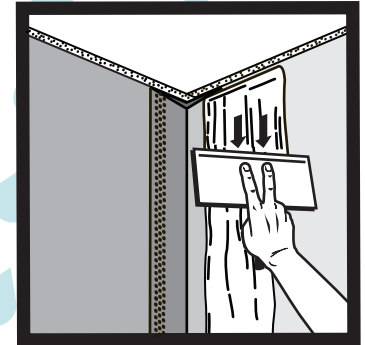
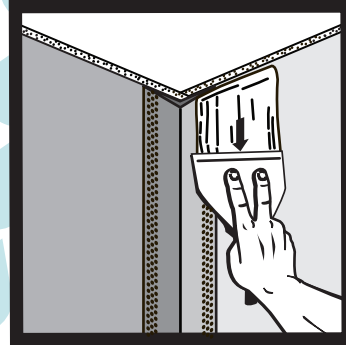


### APPLYING MUD/FINISHING:

The HYDROTRIM corner can be mudded immediately after application using All-Purpose joint compound. If boxing, wait until adhesive has set-up.

Using a 8"- 10" taping knife, apply All-Purpose joint compound over the HYDROTRIM corner, filling the holes. Let dry.

Using a 10"- 12" finishing knife, skim over the HYDROTRIM corner once more with All-Purpose joint compound. Let dry. Sand and paint.

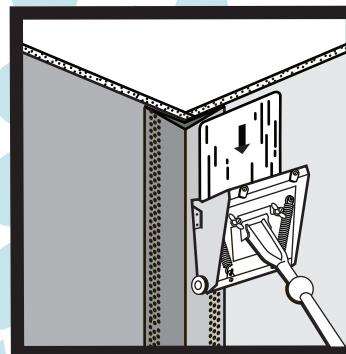


### Box It for faster finishing!

HYDROTRIM corners were designed so that they can also be boxed, resulting in faster and more convenient finishing. Set your 7" or 10" box to #2 or #3 and box up to 30 feet of corners in minutes. HYDROTRIM corner trim uses 15- 30% less mud than bead, so you won't run out of mud before you're done boxing your corner.

Currently available in Outside 90 and L-Trim profiles.

Shipped in water-resistant packaging.



Distributed by

**GRABBER**  
CONSTRUCTION PRODUCTS

A 100% Employee Owned Company

www.grabberman.com  
1-800-477-TURN (8876)